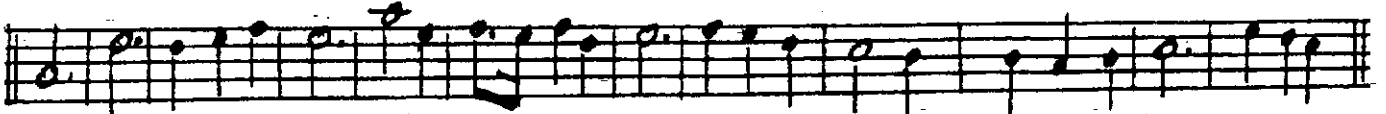
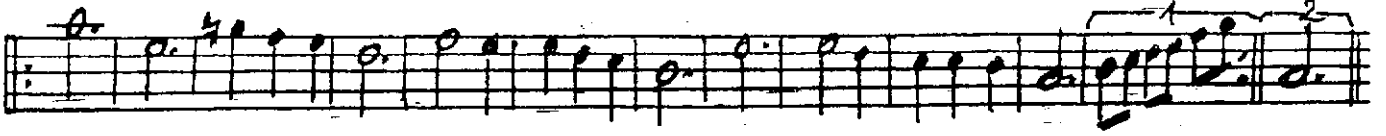
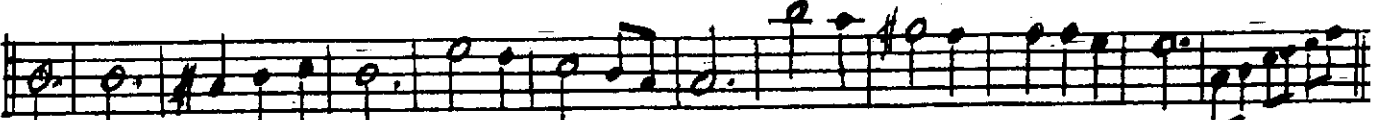


SEMÂ:

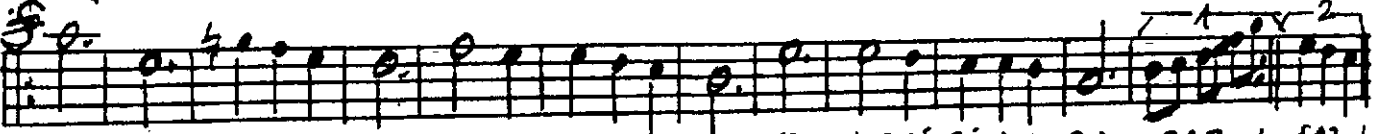
NİŞÂBÜREK BİRTE: MUSTAFA NÂFİZ İBRAHİM
— AKŞAM VE KADIN — BİRTE: DR. ABİDİN BERCEKLER



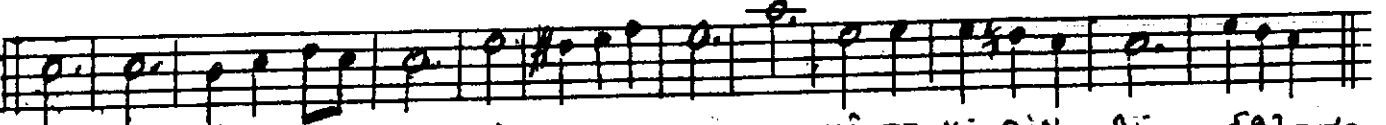
AK ŞAM KURU BİR GÜL Gİ Bİ YÂ DİMDA SİLİN Dİ — SAZ —



AK ŞAM KURU BİR GÜL Gİ Bİ YÂ DİMDA SİLİN Dİ — SAZ —



YAL NİZ O KA DİN KAR ŞI MA BİR NUR Gİ Bİ İN Dİ — SAZ — SAZ —



BAK TIM YÜZÜ NE GÖZ LE Rİ MİN MÂ TE Hİ DİN Dİ — SAZ —



BAK TIM YÜZÜ NE GÖZ LE Rİ MİN MÂ TE Hİ DİN Dİ

MAYIS 1966

PADERBORN
ALMANYA

AKŞAM, KURU BİR GÜLGİBİ. YÂDINDA SİLİNDİ
YALNIZ O KADIN, KARŞIMA BİR NUR GİBİ İNDİ
BAKTIM YÜZÜME... GÖZLERİMİN MÂTEMİ DİNDİ
YALNIZ O KADIN, KARŞIMA BİR NUR GİBİ İNDİ